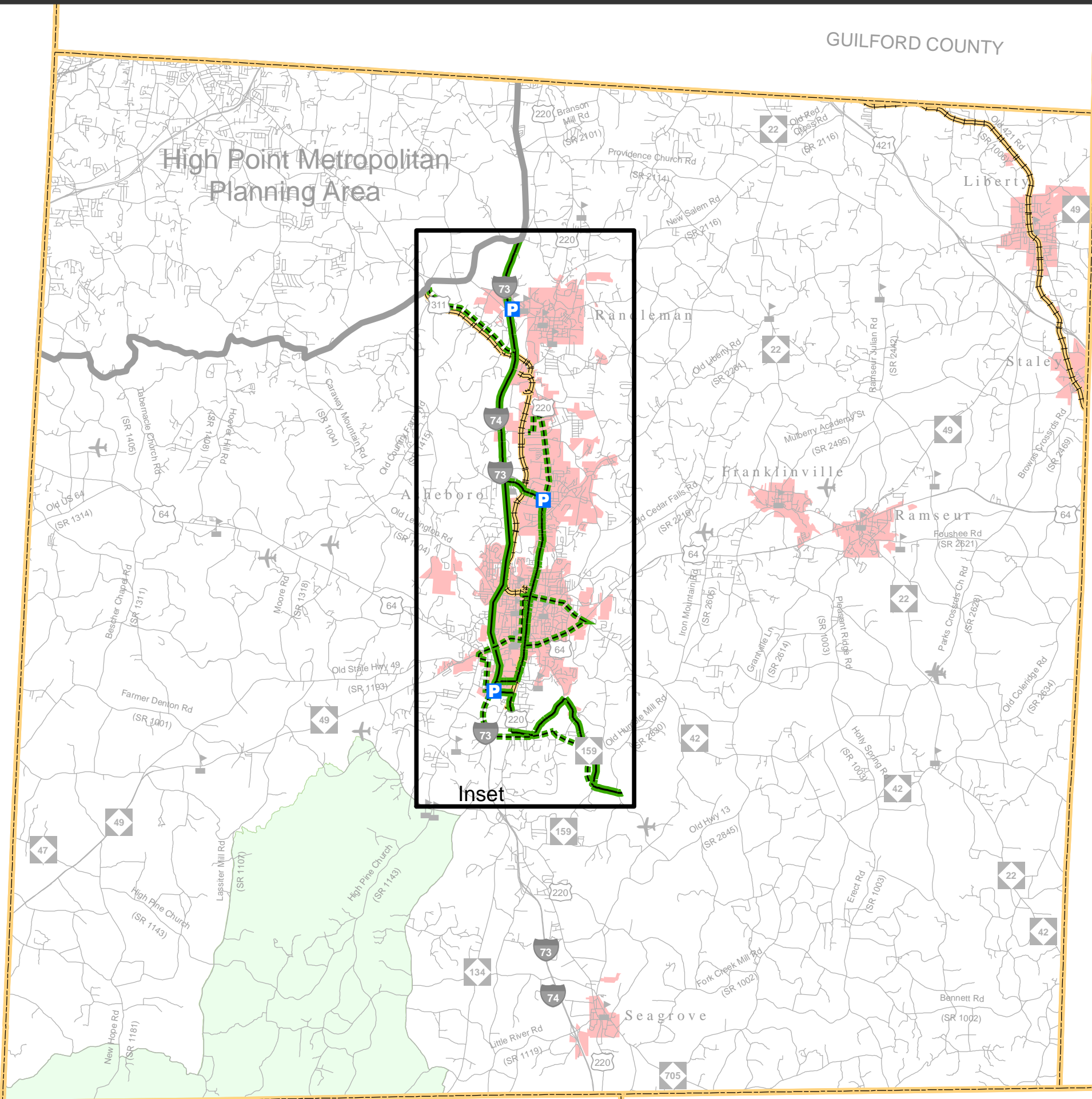


GUILFORD COUNTY

ALAMANCE COUNTY

DAVIDSON COUNTY

CHATHAM COUNTY



Public Transportation and Rail Map



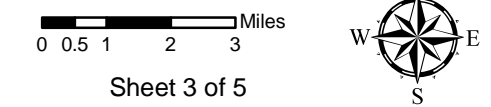
Randolph County

Comprehensive Transportation Plan

Plan date: June 30, 2010

- Bus Routes**
 - Existing
 - Needs Improvement
 - Recommended
- Fixed Guideway**
 - Existing
 - Needs Improvement
 - Recommended
- Operational Strategies**
 - Existing
 - Needs Improvement
 - Recommended
- Rail Corridor**
 - Active
 - Inactive
 - Recommended
- High Speed Rail Corridor**
 - Existing
 - Recommended

- Rail Stops**
 - Existing
 - Recommended
- Intermodal Connector**
 - Existing
 - Recommended
- Park and Ride Lot**
 - Existing
 - Recommended



Public Transportation and Rail Map (Inset)



Randolph County

Comprehensive Transportation Plan

Plan date: June 30, 2010

Bus Routes

- Existing
- Needs Improvement
- Recommended

Fixed Guideway

- Existing
- Needs Improvement
- Recommended

Operational Strategies

- Existing
- Needs Improvement
- Recommended

Rail Corridor

- Active
- Inactive
- Recommended

High Speed Rail Corridor

- Existing
- Recommended

Rail Stops

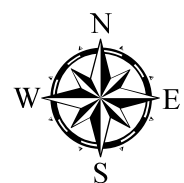
- Existing
- Recommended

Intermodal Connector

- Existing
- Recommended

Park and Ride Lot

- Existing
- Recommended



Sheet 3A of 5

Base map date: December 2009

Refer to CTP document for more details

